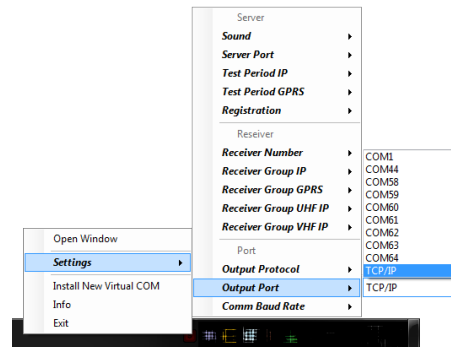
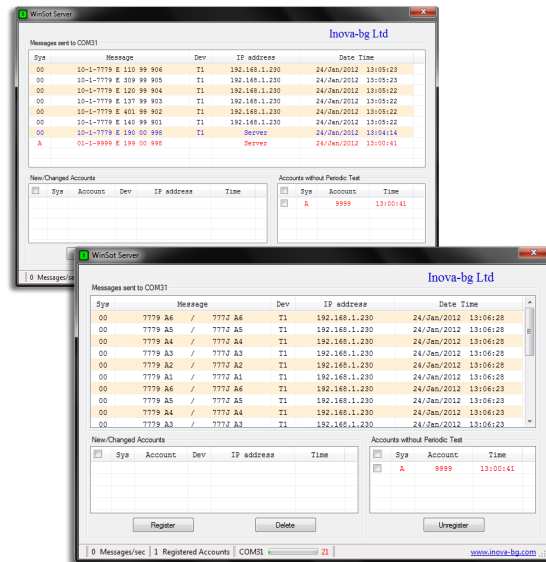




Server Tau

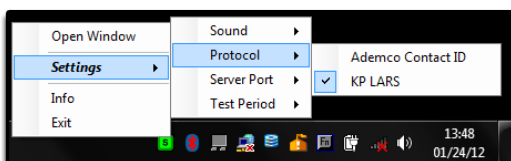
First Radio-IP-GPRS hybrid security system

www.inova-bg.com



Main features

- Server Tau is server software designed to receive alarm messages by IP and GSM/GPRS communication networks
- Supported protocols: Ademco Contact ID, KP LARS
- Capability to combine monitoring and server stations on one computer
- Data processing - encryption, decryption, check of authenticity
- Maximum managed security sites - 65535
- Check for received test messages from every security site. Generates messages for missing and recovered test



- Check for messages from new or preconfigured security sites. Generates alarm messages in those conditions
- Redirect accepted messages by IP, GSM/GPRS to virtual or real serial port on Sur-Gard CID or Ademco 685 CID protocol for connection with monitoring software
- Buffer for the serial connection with monitoring station. If the serial connection fails last messages (up to 100000) will be buffered and send immediately after reconnection of the serial connection. Visual information for the condition of the buffer
- User-friendly interface for working and configuring
- Service more than 1000 connections in a second
- Operating system: Windows XP SP3, Windows Vista x86/x64, Windows 7 x86/x64, Windows 10 x86/x64